

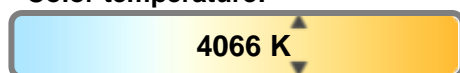
Light efficiency:



Light quality:



Color temperature:

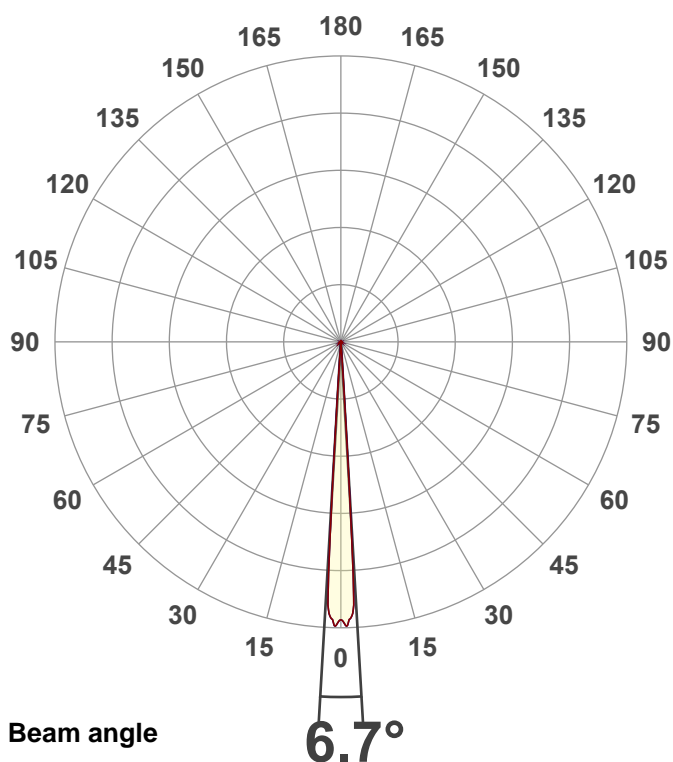


Output: 3733 lm
Peak: 278450 cd
Power: 225.9 W
PF: 1.0



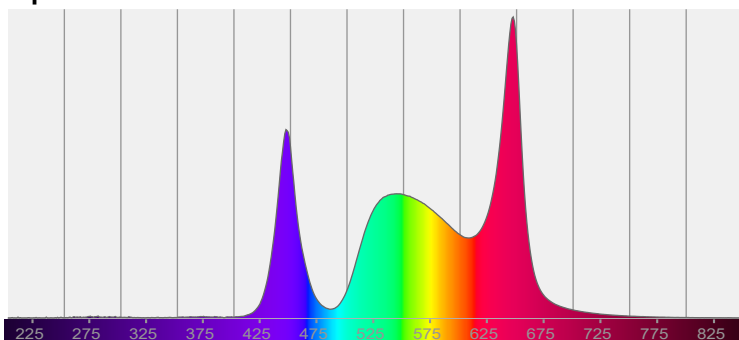
Product name:
Vizi Pix Z19 (Zoom Narrow,High CRI)
Item number:

Date and time:
5/5/2026 12:46:52 PM

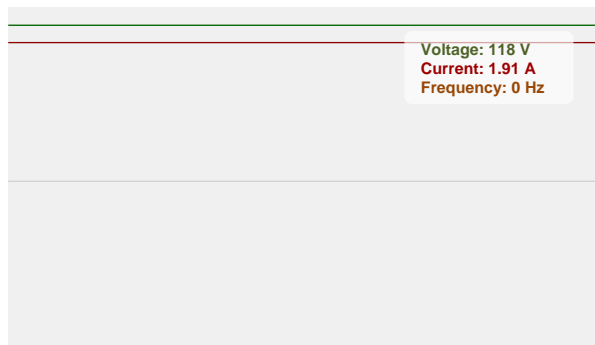


CIE 1931
x: 0.374
y: 0.362

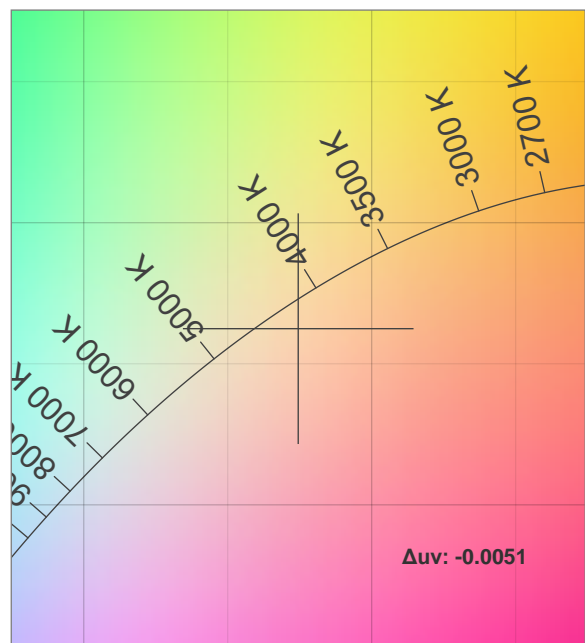
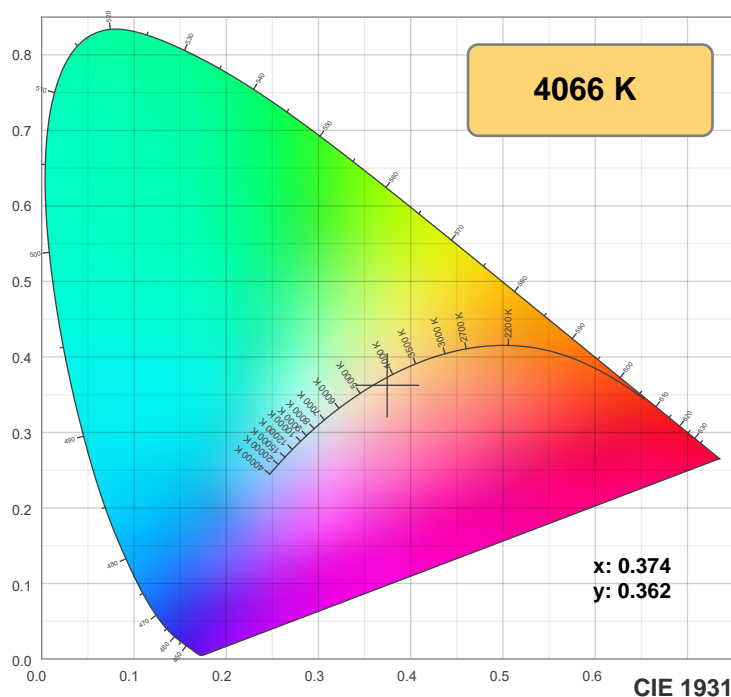
Spectra



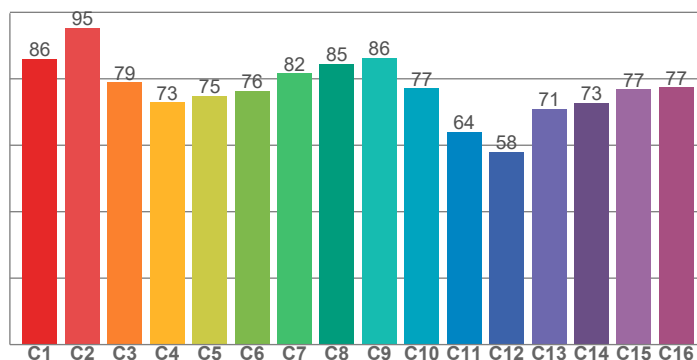
Power



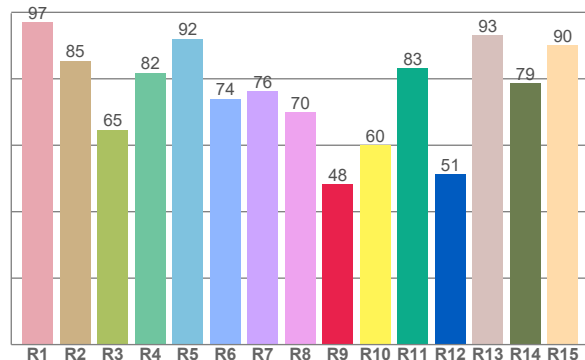
Color details



TM-30: 77.6



CRI: 80.2 (R1-R8)



CRI R values, only R1-R8 are used to calculate final CRI value

R1	R2	R3	R4	R5	R6	R7	R8	R9	R10	R11	R12	R13	R14	R15
97.0	85.4	64.6	81.9	92.0	74.0	76.3	70.0	48.2	60.0	83.2	51.2	93.0	78.6	90.0

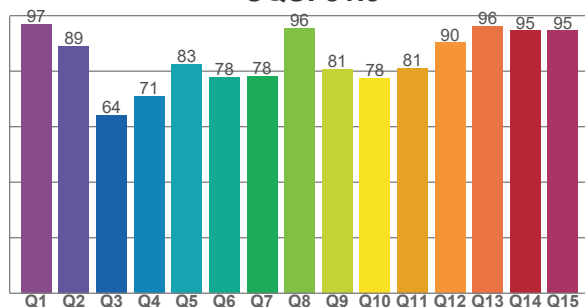
TM30 C values, 16 binned values out of total of 99 C values

C1	C2	C3	C4	C5	C6	C7	C8	C9	C10	C11	C12	C13	C14	C15	C16
86.0	95.2	78.9	73.0	74.9	76.4	81.6	84.5	86.2	77.1	64.1	58.1	70.9	72.8	76.8	77.4

CQS Q values

Q1	Q2	Q3	Q4	Q5	Q6	Q7	Q8	Q9	Q10	Q11	Q12	Q13	Q14	Q15
97.1	89.0	64.2	70.9	82.5	77.8	78.3	95.6	80.8	77.6	81.1	90.3	96.2	94.6	94.7

CQS: 81.9



Color parameters

Color temperature	Color rendering index	Red component	Color fidelity	Color gamut	Color quality scale	Color coordinate cie 1931	Color coordinate cie 1931	Color coordinate	Color coordinate	Color deviation from black body
CCT	CRI	CRI R9	TM30 Rf	TM30 Rg	CQS	x	y	u	v	Δuv
4066 K	80.2	48.2	77.6	110.7	81.9	0.374	0.362	0.227	0.329	-0.0051

TM-30 details

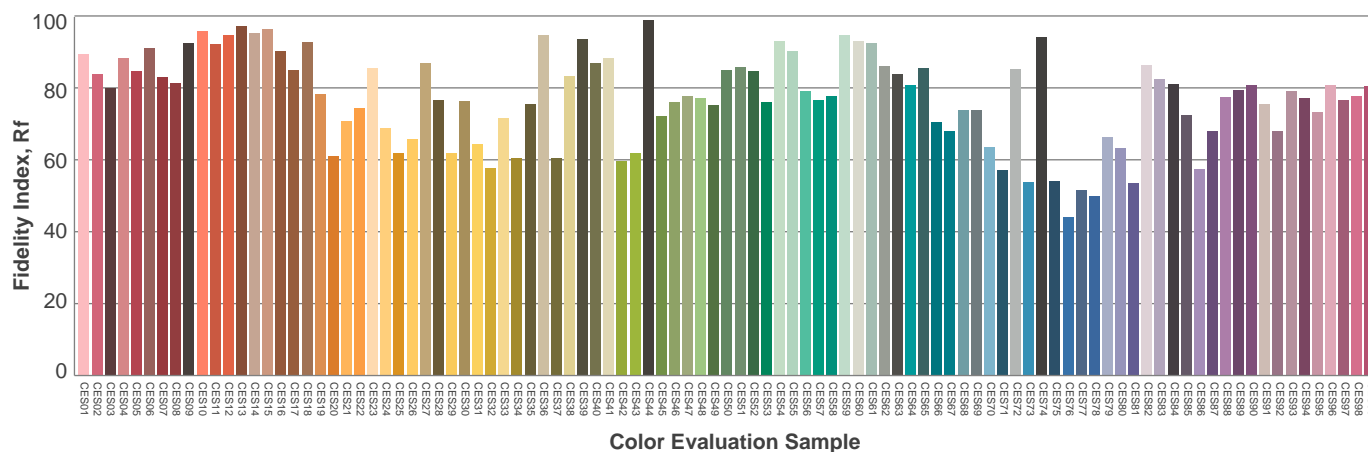
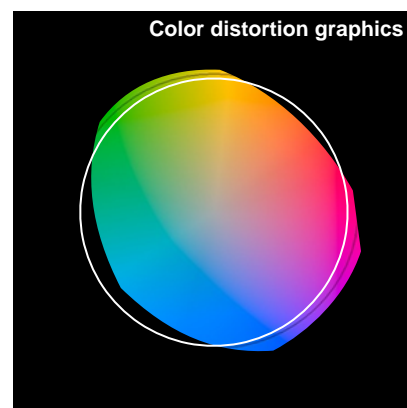
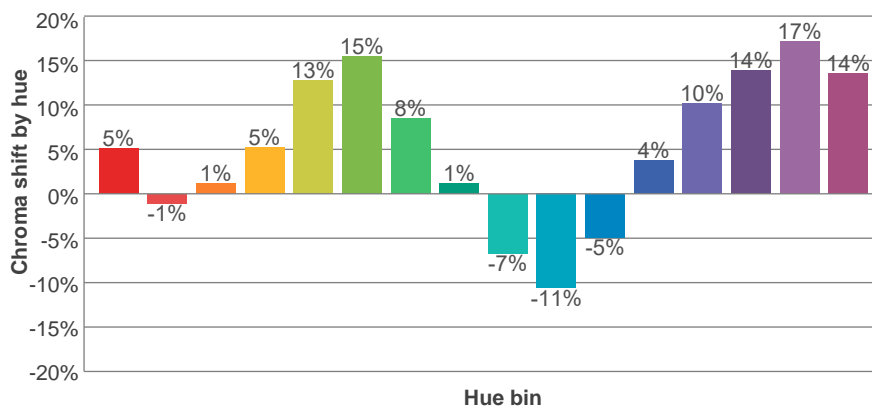
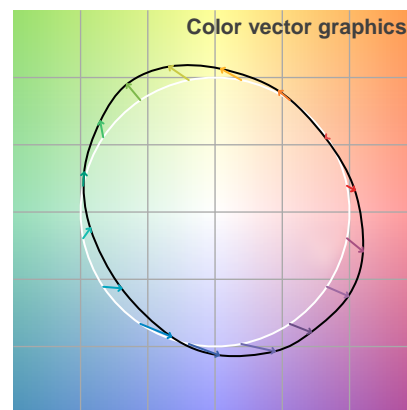
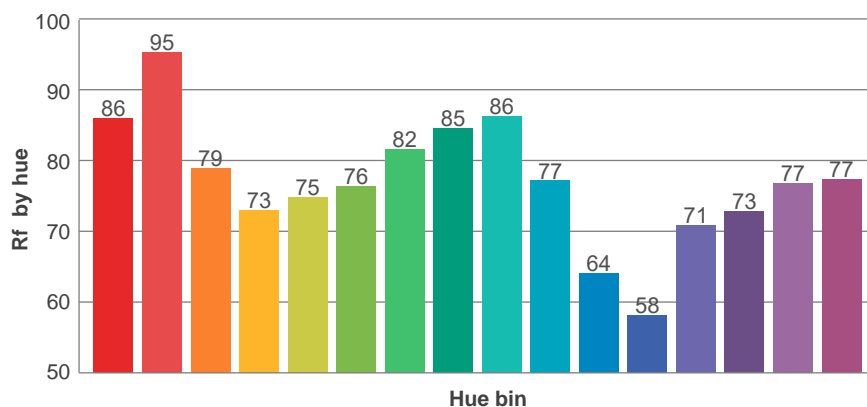
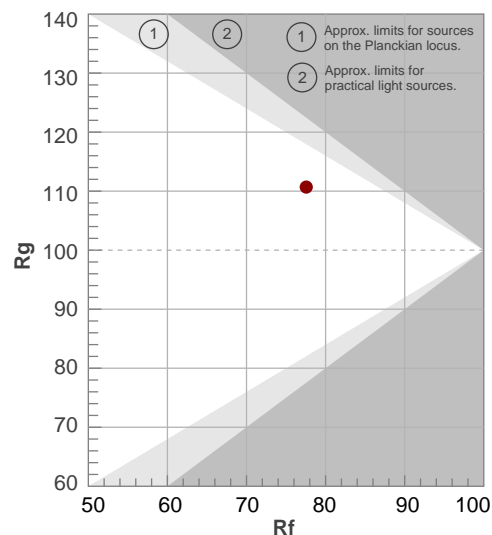
Rf 77.6

Fidelity index Rf

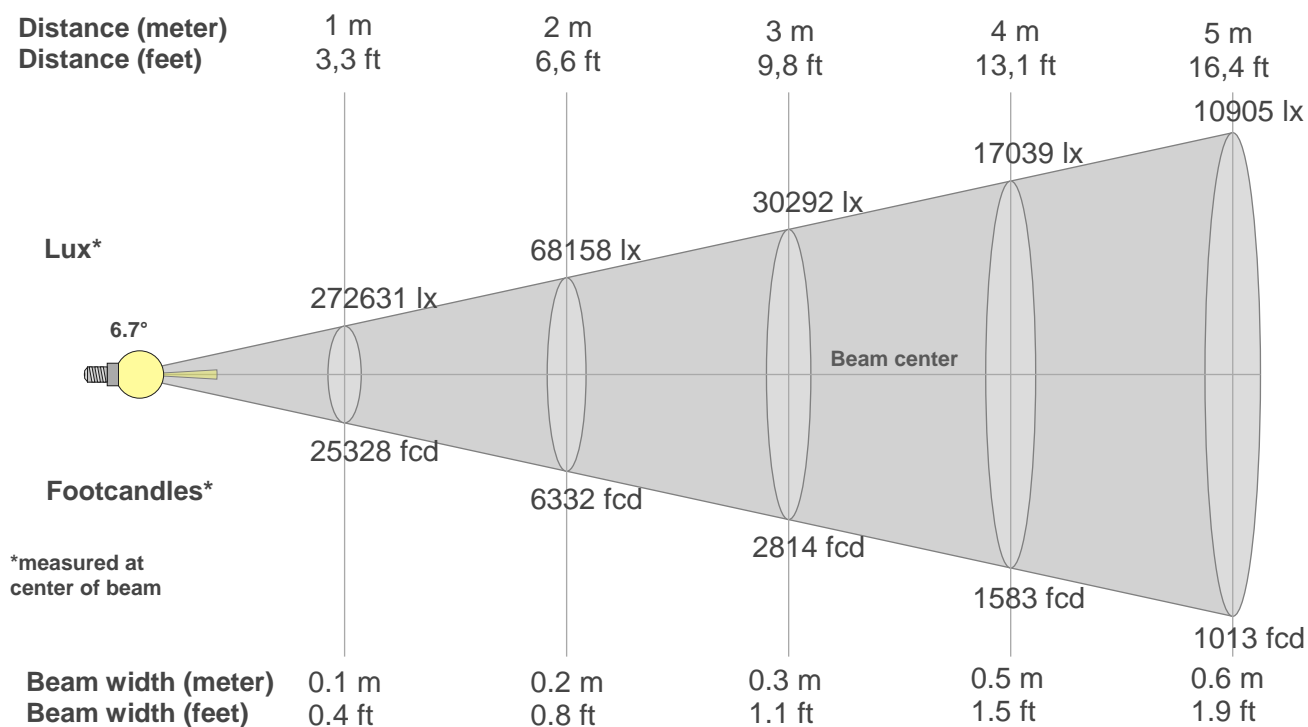
Rg 110.7

Gamut index Rg

Hue Bin	R _f	Shifts (%)	
		Chroma	Hue
1	86	5%	-4%
2	95	-1%	0%
3	79	1%	10%
4	73	5%	16%
5	75	13%	12%
6	76	15%	2%
7	82	8%	-9%
8	85	1%	-10%
9	86	-7%	-6%
10	77	-11%	8%
11	64	-5%	24%
12	58	4%	24%
13	71	10%	23%
14	73	14%	10%
15	77	17%	3%
16	77	14%	-7%



Beam details



Beam intensities from 1-20m

1m	2m	3m	4m	5m	6m	7m	8m	9m	10m	11m	12m	13m	14m	15m	16m	17m	18m	19m	20m
3.3ft	6.6ft	9.8ft	13.1ft	16.4ft	19.7ft	23ft	26.2ft	29.5ft	32.8ft	36.1ft	39.4ft	42.7ft	45.9ft	49.2ft	52.5ft	55.8ft	59.1ft	62.3ft	65.6ft
272631lx	68158lx	30292lx	17039lx	10905lx	7573lx	5564lx	4260lx	3366lx	2726lx	2253lx	1893lx	1613lx	1391lx	1212lx	1065lx	943lx	841lx	755lx	682lx
25328.3 fcd	6332.1 fcd	2814.3 fcd	1583 fcd	1013.1 fcd	703.6 fcd	516.9 fcd	395.8 fcd	312.7 fcd	253.3 fcd	209.3 fcd	175.9 fcd	149.9 fcd	129.2 fcd	112.6 fcd	98.9 fcd	87.6 fcd	78.2 fcd	70.2 fcd	63.3 fcd

Intensities in 0° c-plane

0°	1°	2°	3°	4°	5°	6°	7°	8°	9°	10°	11°	12°	13°	14°	15°	16°	17°	18°	19°
273k	278k	271k	225k	12k	1k	1k	1k	0k	0k	0k	0k	0k	0k	0k	0k	0k	0k	0k	0k
100%	102%	99%	83%	4%	0%	0%	0%	0%	0%	0%	0%	0%	0%	0%	0%	0%	0%	0%	0%

Intensities in 90° c-plane

0°	1°	2°	3°	4°	5°	6°	7°	8°	9°	10°	11°	12°	13°	14°	15°	16°	17°	18°	19°
273k	278k	271k	225k	12k	1k	1k	1k	0k	0k	0k	0k	0k	0k	0k	0k	0k	0k	0k	0k
100%	102%	99%	83%	4%	0%	0%	0%	0%	0%	0%	0%	0%	0%	0%	0%	0%	0%	0%	0%

Intensities in 180° c-plane

0°	1°	2°	3°	4°	5°	6°	7°	8°	9°	10°	11°	12°	13°	14°	15°	16°	17°	18°	19°
273k	278k	271k	225k	12k	1k	1k	1k	0k	0k	0k	0k	0k	0k	0k	0k	0k	0k	0k	0k
100%	102%	99%	83%	4%	0%	0%	0%	0%	0%	0%	0%	0%	0%	0%	0%	0%	0%	0%	0%

Intensities in 270° c-plane

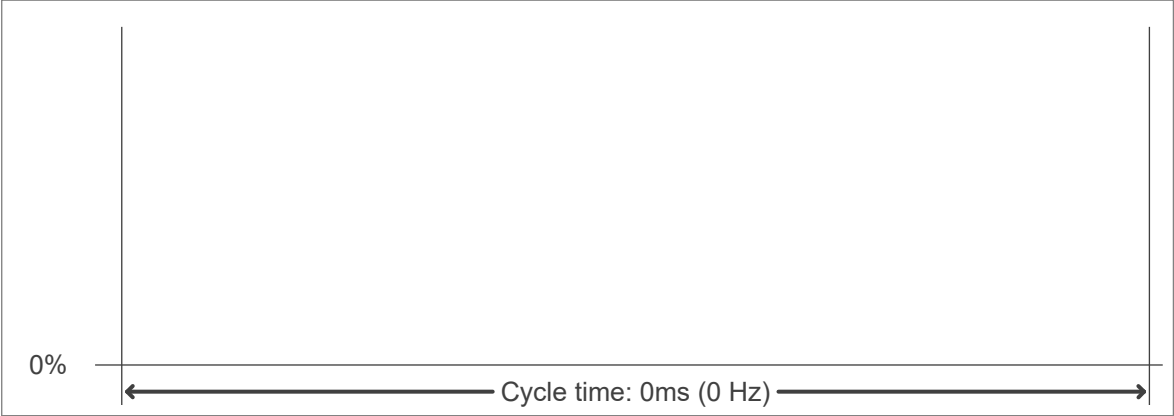
0°	1°	2°	3°	4°	5°	6°	7°	8°	9°	10°	11°	12°	13°	14°	15°	16°	17°	18°	19°
273k	278k	271k	225k	12k	1k	1k	1k	0k	0k	0k	0k	0k	0k	0k	0k	0k	0k	0k	0k
100%	102%	99%	83%	4%	0%	0%	0%	0%	0%	0%	0%	0%	0%	0%	0%	0%	0%	0%	0%

Beam angle 50%	Field angle 10%	Cutoff angle 2,5%	Intensity ratio in 120° cone	Intensity ratio in 90° cone
6.7°	7.5°	8.1°	96.2%	91.4%

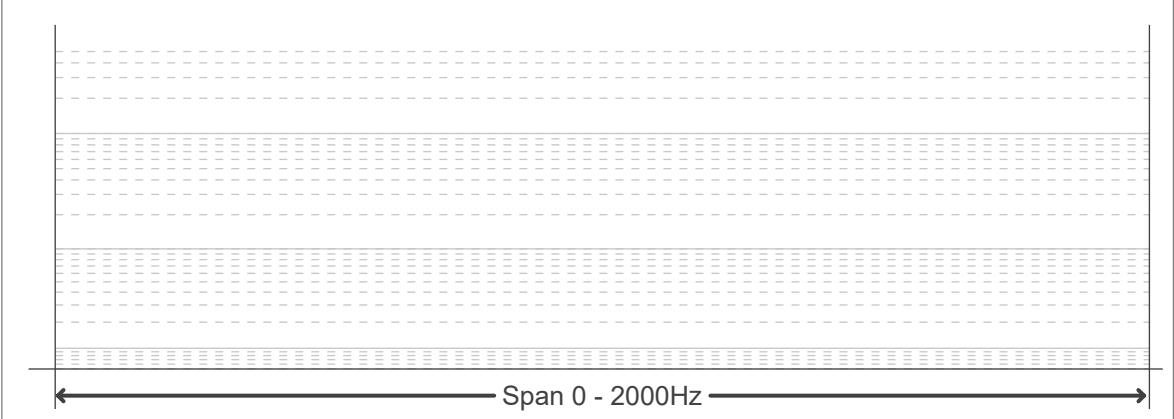
Flicker curve (complete sampled flicker signal)



Flicker frame (frame of one flicker period)



Flicker FFT (frequency scope of flicker curve)



Flicker results:

Flicker frequency:		n/a Hz	
Flicker index:	n/a	JA8/10 40Hz	n/a %
Flicker percentage:	n/a %	JA8/10 90Hz	n/a %
SVM: (Visual flicker)	n/a	JA8/10 200Hz	n/a %
PstLM	n/a	JA8/10 400Hz	n/a %
Mp	n/a	JA8/10 1000Hz	n/a %

Flicker conditions:

Sample rate:	n/a samples/second
--------------	--------------------